



**WATER AND POWER  
EMPLOYEES' RETIREMENT PLAN**

**National Employee Benefits Day**

---

*Recognizing the professionals who provide, manage, and communicate employee benefits.*





# 23,000 TOTAL MEMBERS



## GROWTH

**900**

New Members

**1,835**

Contracts, Backbills  
& Refunds



## TRANSITION

**350**

Retirements

**500**

Deaths



## CLAIMS

**1,200**

Disability

**125**

Divorce, Probate  
& Legal

# Operational Activity & Compliance



## TAX & FINANCE

**10,000**

1099s Issued

**4**

Financial Reporting



## INVESTMENTS

**\$25b**

Assets

**157**

Mandates



## ENGAGEMENT

**700**

Members Trained

**1,600**

Customer Outreach

## SUPPORT



**10,000**

Documents  
Scanned

**400**

Personnel  
Transactions

**3,400**

Office  
Visitors

**7,700**

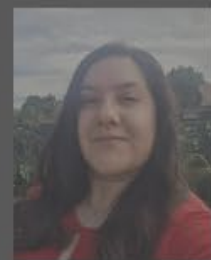
Retire  
Emails

**1,300**

Trouble  
Tickets



**63 EMPLOYEES**  
*So Many Lives Touched*





**63 + 1  
EMPLOYEES**

*So Many Lives  
Touched*